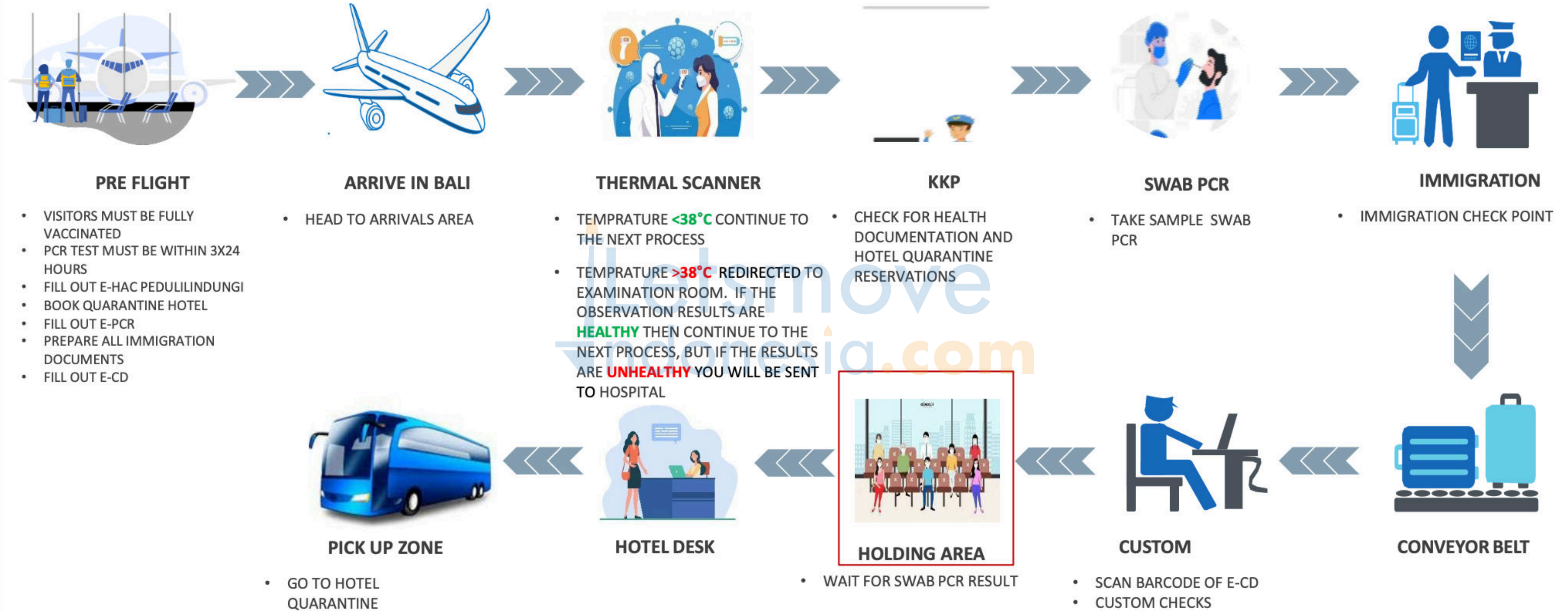


BALI INTERNATIONAL AIRPORT PREPARES TO OPEN

**CHECK OUT LETSMOVEINDONESIA'S
ENGLISH TRANSLATION OF THE NEW PROTOCOLS**



- REGISTRATION DESK
PICK UP POINT FOR
HOTEL
- HOLDING AREA
SWAB PCR RESULT



HOTEL DESK

- SCAN BARCODE E-CD
- COUNTER : 4 (TP)
- WP : 10 SECONDS
- PR : 1440
PAX/HOURS



CUSTOM

- WEST COUNTER 13 UNIT
(26 PERSONEL)
- EAST COUNTER 3 UNIT
(6 PERSONEL)
- WP : 1 MINUTES
- PR : 1920 PAX/HOURS



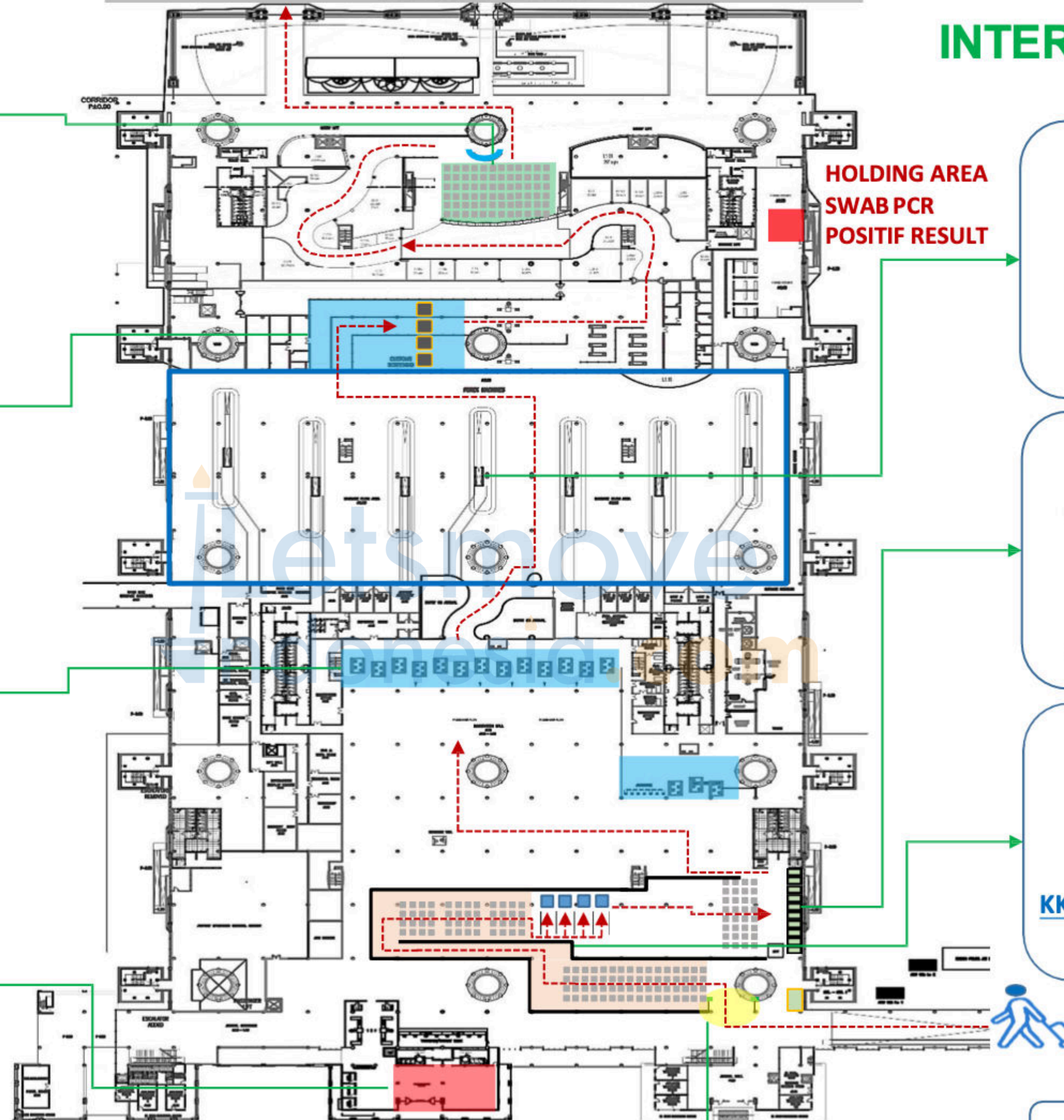
IMMIGRATION

- TEMPORARY
PLACEMENT WHEN
DETECTED PASSANGER
WITH TEMPERATURE
MORE THAN 38°C

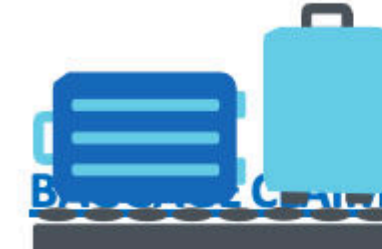


EXAMINATION
ROOM

PICK UP ZONE



FLOW INTERNATIONAL ARRIVAL



CONVEYOR BELT

- TOTAL CONVEYOR
7 UNIT
- CAP 1499 PAX



20 CUBICLE
SWAB PCR TEST

- SCAN BARCODE E-PCR
- PRINT LABEL SAMPLING
- LABEL MOUNTING
SAMPLING SWAB
- PROCESS TIME 1.5
MINUTES
- PROCESS 800 PAX/HOURS



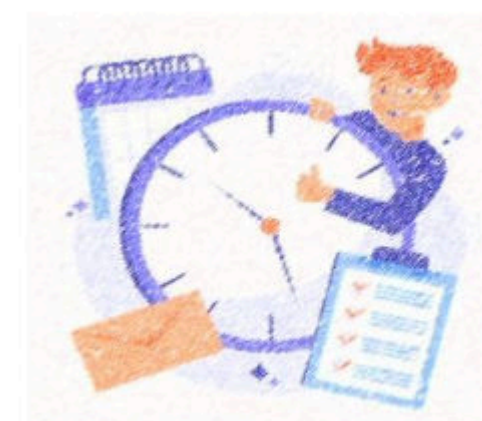
KKP CHECKING

- REVIEW DOCUMENTATION
OF PEDULI LINDUNGI, E-PCR
& QUARANTINE HOTEL
- KKP counter : 8 PERSONEL
- WP : 1 MINUTES
- PR : 480
PAX/HOUR
- SEATS

THERMAL SCANNER

PROCESSING TIME FOR 1 (ONE) PASSENGER		
WT AIRPLANE→THERMO SCANNER	1	MINUTES
WT THERMO SCANNER→KKP	0.5	MINUTES
WP KKP	1	MINUTES
WT KKP→SWAB CUBICLE	0.5	MINUTES
WP SWAB	1.5	MINUTES
WT SWAB CUBICLE→IMIGRATION	1	MINUTES
WP IMMIGRATION	1	MINUTES
WT IMMIGRATION→CONVEYOR BELT	0.5	MINUTES
WP BAGGAGE COLLECTION	0.5	MINUTES
WT CONVEYOR BELT→CUSTOMS	0.5	MINUTES
WP CUSTOMS	0.166	MINUTES
WT CUSTOMS→HOLDING AREA	1.5	MINUTES
WP WAIT FOR PCR RESULT+ REG HOTEL	60	MINUTES
WT HD HOTEL→ PICK UP	0.5	MINUTES
TOTAL TIME	70.166	MINUTES
INFORMATION		
WT : WAKTU TEMPUH / TRAVEL TIME		
WP : WAKTU PROSES / PROCESS TIME		

ESTIMATED TIME PER PASSENGER FROM DEPLANING TO EXITING AIPIRT IS 60 – 70 MINUTES.



QUARANTINE HOTEL CAPACITY					
NO	HOTEL	TOTAL ROOMS	TOTAL ISOLATION ROOMS	TOTAL QUARANTINE ROOMS	PERCENTAGE (%)
1	GRAND HYATT BALI	636		100	16
2	MELIA BALI	494		30	6
3	NUSA DUA BEACH HOTEL	382		130	34
4	THE WESTIN NUSA DUA	433		100	23
5	THE LAGUNA, A LUXURY COLLECTION	287		96	33
6	COURTYARD BY MARRIOTT NUSA DUA	250		40	16
7	HYATT REGENCY	363		100	28
8	GRIYA SANTRIAN	128		20	16
9	TAKSU SANUR HOTEL	74		20	27
10	TANDJUNG SARI	29		7	24
11	PRIME PLAZA SUITES SANUR	49		10	20
12	SWISS-BELRESORT WATU JIMBAR	306		18	6
13	MAYA UBUD RESORT & SPA	108		8	7
14	THE WESTIN RESORT & SPA UBUD, BALI	120		19	16
15	THE UBUD VILLAGE RESORT & SPA	30		10	33
16	THE UBUD VILLAGE HOTEL	62		20	32
17	THE SANKARA RESORT & SPA UBUD BY PRAMANA	24		7	29
18	THE ROYAL PITA MAHA	75		6	8
19	KOMANEKA RESORTS	177		40	23
20	NOVOTEL BANDARA NGURAH RAI	206		120	58
21	ASTON KUTA HOTEL & RESIDENCE	215		40	19
22	SWISS-BELHOTEL TUBAN	75		15	20
23	BALI DYNASTY RESORT	313		45	14
24	FAIRFIELDS BY MARRIOTT BALI KUTA SUNSET ROAD	227		50	22
25	HILTON GARDEN INN BALI NGURAH RAI AIRPORT	288		34	12
26	HARPER KUTA BALI	149		50	34
27	RAMADA BY WYNDHAM BALI SUNSET ROAD KUTA	271	70	0	0
28	SOL BY MELIA BENOA BALI	127		31	24
29	CONRAD BALI	368		32	9
30	MERUSAKA	455		120	26
31	THE MULIA REORT AND VILLA	526		24	5
32	THE RITZ CARLTON BALI	313		22	7
33	HILTON BALI RESORT NUSA DUA	420		120	29
34	VICEROY	40		40	100
35	PAYOGAN	54		4	7
	TOTAL	8074	70	1528	19



PREPARATION OF ALL STAKEHOLDERS IN THE AIRPORT FAL COMMITTEE

ENSURING THE PREPAREDNESS OF HUMAN RESOURCES AND RT-PCR EQUIPMENT TO SUPPORT THE INSPECTION AT ARRIVAL

ENSURING REFERRAL HOSPITAL SUPPORT

PROVISION COLLABORATION OF TRANSPORTATION FACILITIES WITH BUS (BALI TOURISM BOARD)

ENSURING HOTEL PREPAREDNESS FOR QUARANTINE BY STANDARD (SATGAS, CHSE-PHR I, AND DINKES)

PROBLEMS	ALTERNATIVE SOLUTIONS
1. PREPAREDNESS APPLICATION OF PL/PEDULI LINDUNGI FOR FOREIGNER	<ul style="list-style-type: none"> COORDINATION WITH MINISTRY OF COMMUNICATION AND INFORMATION TECHNOLOGY
2. THERE IS NO INTEGRATED STANDARD OPERATING PROCEDURS (SOP) BETWEEN ALL STAKEHOLDERS (CURRENTLY STILL STANDING ALONE IN EACH STAKEHOLDER)	<ul style="list-style-type: none"> THE UNIFICATION OF INTEGRATED STANDARD OPERATING PROCESS (SOP) IN THE HANDLING OF FOREIGN TOURISTS (HAS BEEN INITIATED A MEETING BY THE BALI PROVINCIAL TOURISM OFFICE)



DROP ZONE



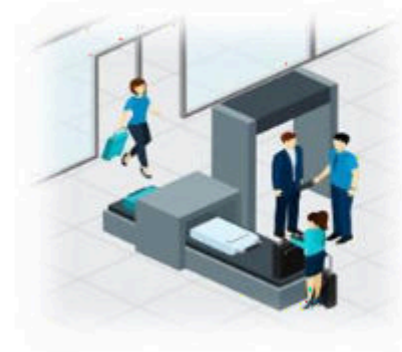
THERMAL SCANNER

- TEMPRATURE **<38°C** CONTINUE TO THE NEXT PROCESS
- TEMPRATURE **>38°C** REDIRECTED TO EXAMINATION ROOM. IF THE OBSERVATION RESULTS ARE **HEALTHY** THEN CONTINUE TO THE NEXT PROCESS, BUT IF THE RESULTS ARE **UNHEALTHY** YOU WILL BE SENT TO HOSPITAL



AVSEC

- CHECK DOCUMENTS OF AVIATION AND SECURITY



CHECK IN



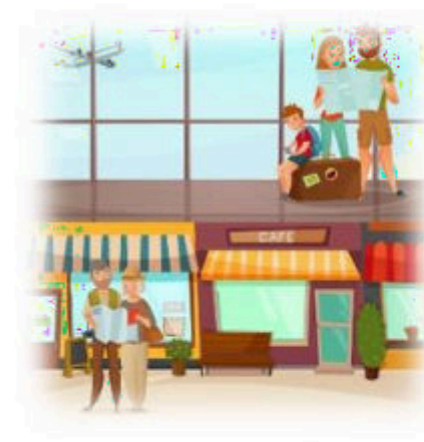
TAPPING BOARDING PASS



TAKE OFF



WAITING ROOM



COMMERCIAL AREA



IMMIGRATION

- CHECKING IMMIGRATION



AVSEC PSCP

Letsmove
Indonesia.com



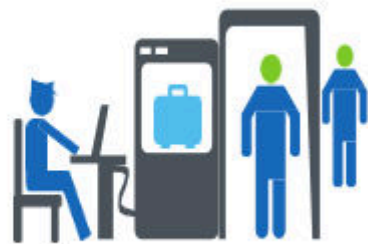
- TEMPORARY PLACEMENT IF PASSENGERS DETECTED WITH TEMPERATURE MORE THAN 38°

- 4 ISLAND (A-B-C-D)
- 96 COUNTER
- WP : 2,5 MINUTES/PAX
- PR : 2304 PAX/HOURS



CHECK IN COUNTER

PSCP



- TRAVEL
- HEALTHY
- SECURITY



DOCUMENTS CHECK



TAPPING BOARDING PASS

- 10 UNITS
- WP : 3 SECONDS/PAX
- PR : 12.000 PAX/HOURS



IMMIGRATION

- 11 COUNTERS (22 PERSONEL)
- 10 AUTOGATE
- WP : 1 MINUTES/PAX
- PR : 1320 PAX/HOURS



WAITING ROOM

- 2023 SEATS (HEALTH PROTOCOLS)